



Woolwich Polytechnic
Sixth Form



PROSPECTUS



2022-2023

WHY CHOOSE WOOLWICH POLY?



POLYMAT OPERATES TWO VERY SUCCESSFUL SCHOOLS IN THAMESMEAD – WOOLWICH POLYTECHNIC SCHOOL FOR BOYS AND WOOLWICH POLYTECHNIC SCHOOL FOR GIRLS.

Welcome to the Poly Sixth Form prospectus. Our Vision is “Success for Everyone” and this means that we are highly inclusive and place the needs of our students and their community at the heart of our work. All that we do is driven by two values – Care and Unity. By Care, we mean that we show a level of consideration and commitment to each-and-every student that we believe is unmatched. This means that each student is seen as an individual and treated with the care that they need to achieve great things. Unity means that we always work together – with our schools, with our community and with our wider partners – to ensure that we are delivering the best strategies to create success for everyone.

The Poly Sixth Form has a track record of impressive exam results and impressive levels of pastoral care and we ensure that the environment for learning is always one which is safe, positive and enjoyable. We work very hard to create strong relationships within our organisation and we welcome strong parental involvement. We know that our students will only achieve their best if they are safe and happy.

I do hope that you find this prospectus exciting and that it persuades you to come and visit us to see what makes us special. I am confident that you will not be disappointed!



WELCOME
FROM THE CEO OF POLYMAT
MR T PLUMB

BECOMING PART OF THE POLY FAMILY

We are a very special Sixth Form that aims to serve the community, improve opportunity for our community and also reflect our community through our diverse and ambitious curriculum, as well as through our diverse staff and student bodies. We hope that you, too, feel that specialness when you visit us; a specialness that encompasses care and compassion, a genuine delight in young adults' contributions and a drive towards "success for everyone".

We have a long and proud history, having educated local students for over 100 years: we have been a technical school; reported as the most improved boy's school in the country; a community school and now an academy; a single school and now the founding 'brother' to our sister school, Woolwich Polytechnic School for Girls. We have year-on-year exam results at A Level and BTEC that make us, our students and their families rightly proud. Yet our relentless focus is upon the futures of our current students as we counsel them through their educational careers to be the most successful version of themselves. This is evident in year-on-year increases in students accessing courses at Oxbridge, in medicine and at prestigious Russell Group universities, as well as high-end apprenticeships in finance.

To support your son or daughter through their Sixth Form education, we have firm foundations in exemplary pastoral care and expert teaching. Safeguarding our students is the absolute priority that informs the behaviours we demonstrate in the staff and student bodies. Our pastoral care and personal development programme are student-centred, empathetic to individual young adults' needs, recognising their challenges and assisting with overcoming them assisting our students in becoming independently minded, self-sustaining ambassadors of our Sixth Form motto, "tomorrow's leaders".



WELCOME
FROM THE HEAD OF SCHOOL
MR T LAWRENCE

We care; we listen; we understand context and we actively build meaningful relationships with every student, something that I have no doubt our current sixth formers would report should you wish to visit our open evening.

Our teaching is equally student-centred, offering support and challenge as required to ensure that all our students achieve the grades they need to pursue the courses and careers they aspire to with confidence. Our ambitious and academically rich curriculum offer is designed to stimulate a culture of curiosity and questioning so that all our students leave us as well-rounded, caring members of the community, ready to navigate the adult world safely, critically and knowledgeably, whether that be the world of work or higher education.

We also recognise that student development is enhanced through pleasure, and we therefore cater for their personal interests with an extensive enrichment programme, including wellbeing days, year 12 work experience, curriculum and university trips and a variety of clubs. There are always opportunities for your son or daughter to have their voice heard, whether through the Student Council or more informal feedback to tutors, teachers and head of year or our dedicated student voice co-ordinator.

I am confident that you will have made the right choice for your son or daughter by privileging us with their care, education and personal development.

WELCOME TO WOOLWICH POLYTECHNIC SIXTH FORM AND THANK YOU FOR TAKING THE TIME TO EXPRESS YOUR INTEREST IN US.

WELCOME TO THE POLY FAMILY

Welcome to Woolwich Poly Sixth Form, an outstanding provision as rated by Ofsted in 2019.

Year on year, our Sixth Form continues to grow, not just in size but in the achievements and successes that we celebrate within our community, one that I am honoured to be part of.

Despite the challenges of the past few years, our students continue to strive for excellence and last year many students left to attend the top universities in the country, including Cambridge, Kings, UCL and more. 24% left for a Russell Group university which is more than double the London average. This year, we had a record number of students apply for Cambridge, Oxford, medicine and dentistry and students have already received offers. Of course, our Apprenticeship uptake is just as impressive with students applying to companies such as Ford, Virgin Media and Price Waterhouse Cooper (who are currently mentoring students in Year 13 and Year 12). Mentoring is a huge focus here at Woolwich Poly and we have links with a range of businesses that work with our students throughout their time here.

We offer a wide range of subjects at A Level and cater our pathways to meet the individual needs of our students. Our aim is to give all students the opportunity to study their first choice of subjects and our large, dedicated team meet regularly with the Sixth Form Raising Standard Lead to ensure that they are on the right course, right from the start. The result is impressive levels of high academic achievement as evidenced by our results of 51% A*-B, 20% achieving top grades of A*/A.

WELCOME FROM
MS H ELLIOTT
HEAD OF
SIXTH FORM



We are extremely lucky to have such a large and experienced team and are passionate about providing our students with a world-class education to prepare our students to become "Tomorrow's Leaders", our motto here at Woolwich Poly Sixth Form. As well as this, at the heart of everything we do here is student and staff well-being: we strive to create an environment to be a place that they feel safe, happy and one that they *want* to attend. The outstanding pastoral care and support comes from experienced Sixth Form Heads of Year, Mentors and Tutors who care. They provide personalised UCAS support, guiding students through the complex process and helping students to make the right choices to maximise future success.

Being in Woolwich Poly Sixth Form is about developing the whole person. As leaders in the school, our Sixth Form students play a crucial role in the life of the school. Students develop these leadership skills through a variety of posts of responsibility on the Student Leadership Team. Furthermore, work experience opportunities are given in year 12 to ensure that our students contribute positively to the lives of others and gain experience in their desired area of interest, which is in keeping with our commitment to preparing "Tomorrow's Leaders".

I can unreservedly recommend our Sixth Form and I look forward to working with you in the future.

MEET OUR SIXTH FORM TEAM



The Sixth Form pastoral team are looking forward to welcoming you to our community, where our focus is on success for everyone. We hope that you will join us to thrive and become one of tomorrow's leaders.



Our friendly student support team are here to provide guidance and advice in the classroom and beyond.



THE CURRICULUM

YOUR CHOICES

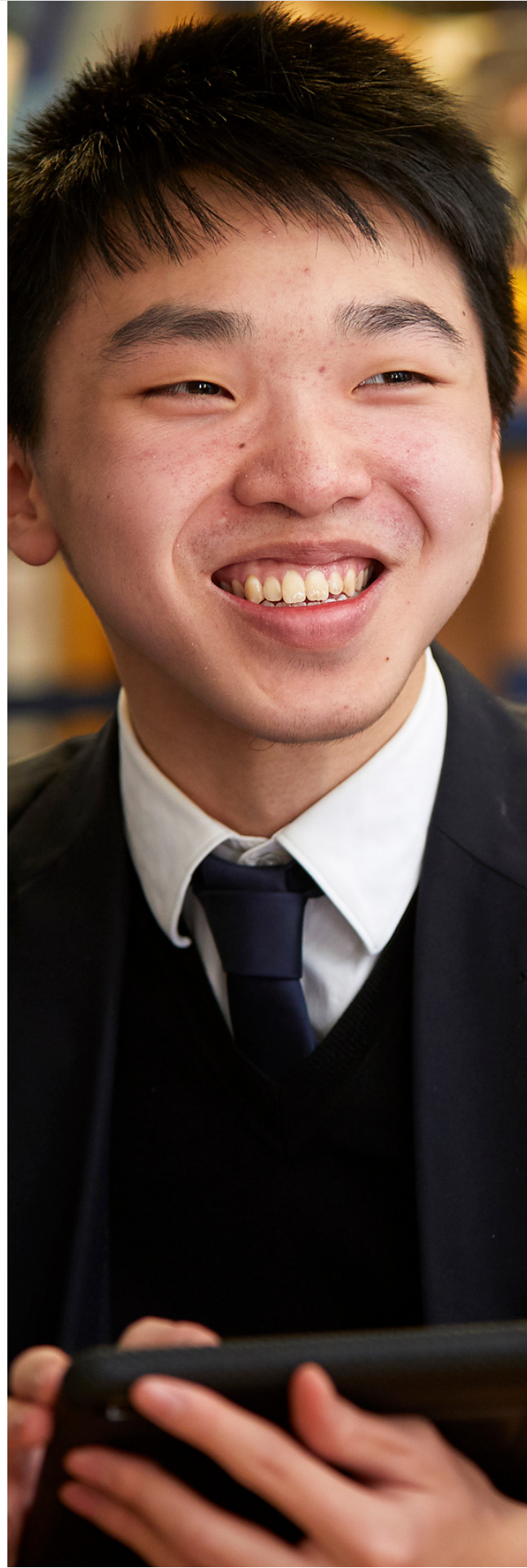
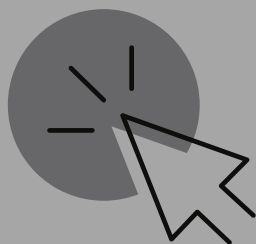
Woolwich Poly Sixth Form students follow a two-year programme of study, choosing from a broad range of 27 A-level or Vocational qualifications. All the courses that we offer are graded as 'Level 3' qualifications by Ofqual, which means they are all of equal difficulty and accepted equally by the majority of universities, apprenticeships and employment opportunities.

Students have the choice of selecting a combination of three A-levels, which tend to be more heavily exam-based in their assessment, and/or vocational qualifications such as BTEC or Technical level qualifications, which have a greater proportion of coursework as part of their assessment. Some students may wish to deliberately select a greater number of 'facilitating subjects' as their choices; these are A-level courses that have been specifically recommended by some top universities and include English Literature, Mathematics, Biology, Chemistry, Physics, History and Geography.

All of our subjects are delivered by our expert specialist teachers, over seven 50-minute periods a week. Our core aim is to support and secure aspirational levels of achievement for every student. We are dedicated to offering an environment that is conducive to the very best learning and attainment. Our goal is to prepare students for the next stage of their learning, be that university, apprenticeships, or employment.

Students are guided through their choices at their interview and will follow a personalised programme which best suits their ability and ambitions. Acceptance onto the chosen courses will be dependent on meeting the entry requirements. The standard entry requirements for our Sixth Form are a minimum of 5 GCSEs, grade 9 to 5, with at least a grade 5 in English and Maths. Please note that many A level subjects will require a grade 6 or above in English and/or Maths. Please check the individual subject requirements carefully.

***For the full,
detailed
curriculum offer
visit our website:
www.polysixthform.co.uk***



COURSE GUIDANCE

GRADES 2022-2023

All students need to have at least 5 GCSEs at 9 to 5 including English AND Maths at Grade 5. These show typical minimal grades for students studying these courses. Entry requirements for subjects with an asterisk (*) are subject to change. During your enrolment interview you will receive one to one support to ensure you are on the best combination of courses. If there are any extenuating circumstances consideration will be given on a case-by-case basis.

SUBJECT	ENGLISH	MATHS	SUBJECT SPECIFIC REQUIREMENTS (MINIMUM)
Applied Science BTEC	5	5	GCSE Science Grades 5/5
Art & Design A Level	5	5	GCSE Art Grade 6
Biology A Level*	6	6	GCSE Biology Grade 6 or Additional Science Grade 6 in Biology exam unit
Business A Level	6	6	GCSE Business Grade 6 will be an advantage
Business (Single & Double) BTEC	6	6	GCSE Business Grade 5 will be an advantage
Chemistry A Level*	6	6	GCSE Chemistry Grade 6 or Additional Science Grade 6 in Chemistry exam unit
Computer Science A Level	6	6	GCSE Computing Grade 6
Drama A Level	6	5	GCSE Drama Grade 5 will be an advantage
Economics A Level	6	6	
English Language A Level	6	5	GCSE English Language Grade 6
English Literature A Level	6	5	GCSE English Language and Literature Grades 6/6
Extended Project AS Level	6	5	
Film Studies A Level	5	5	
Finance LIBF	6	6	
Forensic and Criminology Investigation BTEC	5	5	GCSE Science Grades 5/5; Note - Must be combined with Applied Science
Further Maths A Level	5	8	GCSE Maths Grade 8; Note - Must be combined with Maths
Geography A Level	6	6	GCSE Geography Grade 6
History A Level	6	5	GCSE History Grade 6
ICT CTEC	5	5	GCSE or ICT Qualification Grade 6 will be an advantage
Mathematics A Level	5	7	GCSE Maths Grade 7
Photography A Level	5	5	GCSE Art Grade 5 will be an advantage
Physics A Level*	6	6	GCSE Physics Grade 6 or Additional Science Grade 6 in Physics exam unit
Politics A Level	6	5	GCSE Humanities (any) Grade 6 is required
Product Design A Level	6	6	GCSE DT Grade 6 will be an advantage
Psychology A Level	6	6	GCSE Science Grades 6/6
Sociology A Level	6	5	GCSE Humanities (any) Grade 6 is required
Sport and Physical Activity CTEC	5	5	

'TOMORROW'S LEADERS'

Choosing a sixth form will be one of your most important decisions this year and you need to make sure that you find a suitable one that will help you achieve your dreams.

MEET OUR HEAD BOYS AND GIRLS



Prapti Adhikari - Head Girl

My experience joining Poly has been quite different from other students. I arrived not only from a new school but from a new country. All of us know that the transition from secondary school to Sixth Form can be difficult but adapting to a system where everyone speaks and works in a different language made it even harder for me. Yet, at the Poly, I was welcomed with open arms. The staff here always go the extra mile, whether it be interventions after school to get students the best grades possible or simply checking in to see how we are doing. There is always someone available. The Sixth Form dedicates a lot of time to providing students with wider opportunities to develop their skills beyond the classroom, including mentoring schemes, like Career Ready, masterclasses and work experience. I can assure you that coming to Poly will make your Sixth Form experience memorable; one that is full of love and joy.

Camille Cabral - Oluwole - Head Girl

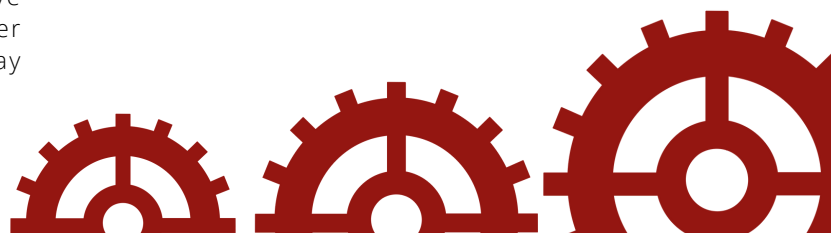
I can't believe I've only spent two years here at Poly; it feels like I've been here for a lifetime. I've made friends for a life, learnt amazing lessons and had passionate teachers for whom I'm incredibly grateful to be under their tutelage. As any student, I was nervous coming to Woolwich Poly. It was a new school, in a new area, filled with new people I didn't know. What initially attracted me to Poly was the wide variety of subjects it offered, catering to my academic needs and then some. What led me to stay is the faculty who are dedicated to their subject, the students who make every break memorable and the opportunity to show off my best formal outfits. Initially I was a bit wary of coming to an all-boys school. As a girl, knowing I'd be the minority, why wouldn't I be? I am so happy to tell you that all my fears were quickly put to rest as soon as I stepped through our gates. I have not only been able to find some amazing female role models within my teachers but also my peers; they've really helped me understand the meaning of a sisterhood. Speaking of sisterhood, I'm also proud to say that we have fostered a very positive relationship with our sister school, Woolwich Poly Girls and I'm excited for the day they join us in the Sixth Form.

Pranjal Nyaupane - Head Boy

From Year 7, Woolwich Poly has helped me in all aspects of my educational journey. Our sixth form consistently sends its students to top universities, proving itself as a worthy institution. The teachers are truly dedicated to their students and create an outstanding learning environment. In our sixth form, students are pushed in the classroom and given excellent career focused opportunities. Alongside amazing academic performance across the spectrum of subjects, Poly also teaches skills needed beyond the classroom through a multitude of opportunities and programmes. Teachers tailor their support to encompass students' strengths and weaknesses allowing them to flourish through the two years and gain the best possible post sixteen experience. No matter what career or educational pathway chosen, Poly provides supportive and specialist guidance, ensuring that no student leaves without meeting their full potential.

Kc Nwabufor - Head Boy

Poly is a place where I have been made to develop myself. By confronting my weaknesses and challenging my limits, I have begun to understand a lot more about my character. It has been a new environment for me, a new atmosphere. As an external student, I have been able to observe from an unbiased point of view: the system, the vision, the desire, and the influence of the pastoral team throughout the school is beyond anything I could have expected. Personally, it hasn't been an easy road for me, but Woolwich Poly has a strong and supportive backbone and that is what makes Woolwich Poly unlike other Sixth Forms. The lessons I have learnt at Poly are lessons that I will not forget. The experiences that I have had with the teachers and students are something that money cannot buy. As Head Boy of the Woolwich Poly Sixth Form, I have seen the incredible efforts made day-to-day to ensure my success. I realize that I have something special in this school: an environment where people believe in me and push me always.



TRANSITION: TAKING YOUR SIXTH FORM STEP



The academic leap from GCSEs to A-Levels can be challenging for students. In order to ensure a smooth transition from Year 11 into Year 12, we offer a number of opportunities to assist with this step.

All applicants will be interviewed for our oversubscribed Sixth Form. Appropriate courses and career aspirations are discussed during the interviews with experienced staff. During the summer term, all students who have been accepted into our Sixth Form will be expected to participate in our popular Springboard Transition School.

This is where we begin our Level 3 teaching over a one-week period towards the end of the summer term. All of this ensures that students make informed choices when selecting their Level 3 courses.

We also have an exciting induction programme at the start of the year which includes visits from both our partnership universities, Newcastle and Exeter, speakers from multiple professional backgrounds, and a team-building day to allow students to get to know each other as well as their form tutors.

Stepping up from Year 12 to Year 13 is also very important. We offer a whole week of "Beyond the Poly" activities, which is dedicated to further developing students' work, life and study skills, as well as preparing students for the UCAS application process.

For further advice on choosing your subjects in Sixth Form please visit our website www.polysixthform.co.uk

PASTORAL CARE

DEVELOPING TOMORROW'S LEADERS

We have been recognised through Ofsted and other outside agencies as having an outstanding pastoral system. We believe that every student matters and that every conversation is important. High quality relationships and high-quality interactions with students are the hallmark of our work at the Poly.

Our highly experienced Sixth Form Heads of Year and tutor team take the students through their two years of Post 16 education, delivering a one-to-one mentoring programme to support academic studies, providing guidance for a successful future and enhancing the family ethos of our Sixth Form.

EXTRA-CURRICULAR ACTIVITIES: ABOVE AND BEYOND THE CLASSROOM

One of the many benefits of studying at the Poly is the huge network of community contacts and extra-curricular activities. We want our students to be leaders in the community. This means students need to be confident and as 'world aware' as possible. Our extra-curricular programme covers a myriad of activities, including sports, student ambassadors, as well as university visits and guest speakers from the academic and business worlds. We also offer enrichment trips every half term to broaden the experiences of our students.

In 2020 we added the Career Ready programme to our offering at Woolwich Poly Sixth form. Career Ready is a complete 360-degree opportunity in preparation for the world of work, including one-to-one mentoring, skills masterclasses, and experiences of work. Each individual career ready plan is mapped to specific learning outcomes, enabling our young people to develop the skills, confidence, and aspirations needed for future career success.

This year we have also begun working with The Safe School Ambassadors® Program (SSA) which harnesses the power of students to prevent and stop bullying and mistreatment as well as nurture mental health.

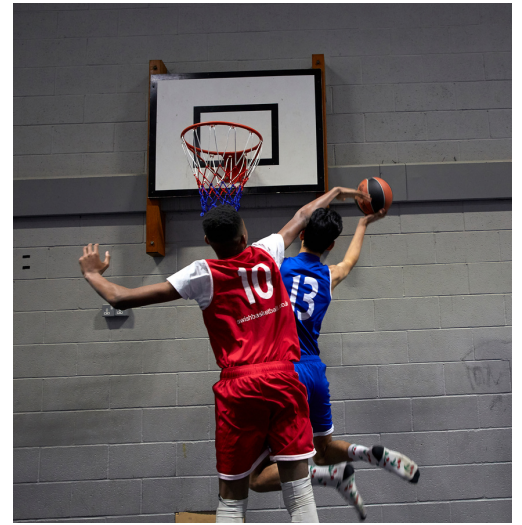


"Leadership and management in the sixth form are outstanding with real ambition and care for all students."

OFSTED, 2019

BEYOND THE POLY: PATHWAYS TO SUCCESS

Our aspiration for our students is to attend an outstanding university or secure an apprenticeship with a prestigious firm. This aspiration has led a number of our alumni into successful careers in multiple vocations, many of whom return to speak in assemblies of their journeys beyond the Poly. For the last five years, 30% of our students, on average, have attended a Russell Group university to study such courses as Medicine, Chemical Engineering, Mathematics and statistical Science, Theoretical Physics, Law and English Literature to name but a few. We have an extended school support system for admission tests and interviews for Oxbridge and other top universities. This also includes a free tuition package for the UCAT that takes place between the summer of Year 12 and Year 13, as well as the BMAT.



Top Achievers' Programme:

Woolwich Poly Sixth Form runs a dedicated Top Achievers' Programme (TAP) for the most academically able students in a year group. This includes support with university applications, interviews and any admissions tests which may be involved, including the UCAT and BMAT. Through this programme we have had incredible success, with the last five years including offers from both the University of Cambridge and the University of Oxford, as well as Medicine and Dentistry courses at universities such as King's College London.

The Access Project:

The Access Project provides an in-school staff mentor who will help students choose the right courses and universities for them. This also includes personal statement clinics and practise interviews. In addition, it provides three extra-curricular societies for Sixth Form students, bringing together students from across the country who are interested in applying to Oxbridge, Medicine, Dentistry and Law to offer support for a successful application to these exceptionally competitive courses or institutions.

In conjunction with The Access Project, we will arrange trips to universities, have talks from guest speakers, and run information sessions for both students and parents. The support provided includes help choosing suitable degree courses and universities.

The Access Project currently works with students across the country along with professional institutions such as KMPG, Linklaters, Slaughter and May and the Cabinet Office to raise students' attainment by providing free one-to-one tuition with these students.

This project has been developed to promote access to Russell Group universities. We have a teaching staff of over 100 university graduates with a number having attended Russell Group universities. The support and guidance that you seek is in every corridor and every classroom.

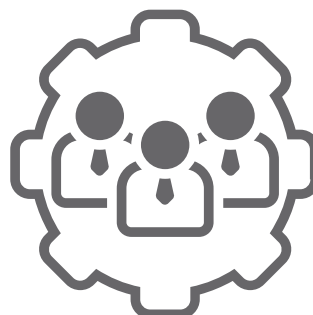
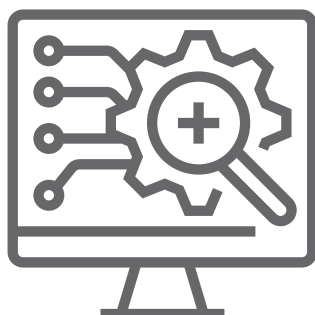
BEYOND THE POLY: APPRENTICESHIPS

Higher apprenticeships go from level 4 to 7 and are equivalent to a foundation degree and above. Degree apprenticeships are available at levels 6 and 7 and are equivalent to a full bachelor's and Master's. They combine work with study and may include a work-based, academic or combined qualification or a professional qualification relevant to the industry.

Here at Woolwich Poly, we recognise the importance of a range of pathways that are individualised for our students. We have a member of staff dedicated to overseeing our apprenticeship and mentoring programme and last year we secured a record number of both Higher and Degree apprenticeships.

Notable apprenticeships for 2022 included:

Kwame Addo	Apprenticeship - Business	OFCOM
Temisan Ajuyah-Valentine	Degree Apprenticeship - Management	Morrisons
Baboucar Badjie	Degree Apprenticeship - Project Management	BCS Consultancy
Amarpreet Chamdal	Degree Apprenticeship - Analyst	Bloomberg
Karan Jadav	Degree Apprenticeship - IT Analyst	Bloomberg
Mohamud Mataan	Degree Apprenticeship - IT Solutions design	LGT Wealth Mgt
Michael Nyaku	Degree Apprenticeship - Engineering	TFL
Abdul Azeem Omar	Degree Apprenticeship - Engineering	Elementa consulting
Ishpreet Singh	Degree Apprenticeship - IT Analyst	PWC





THE DRESS CODE: DRESS FOR SUCCESS

There is an old but true adage that says, 'You dress not for the job you have today, but for the job you want tomorrow.' Our dress code is smart business attire for all students. This reflects our aspirations for our students and the success that they have already achieved and for the standing our students have in our learning community. Their status as ambassadors and role models for all students at The Poly is crucial for the continuing success that our Sixth Form has had, but it is also indicative of the success that our students will have in the future.



APPLICATION FOR SIXTH FORM

The link for applications is <https://woolwichpoly.applicaa.com/year12> and is now live.

Sixth Form Applications open – Thursday 10th November 2022

Sixth Form Applications close – Friday 20th January 2023

Interviews will take place from Monday 23rd January 2023

Applications received after the deadline may not receive an invitation for interview or an offer.



"Teachers pay close attention to individual students' progress. Teachers' subject knowledge is a strength across all subjects. Students make outstanding progress."

OFSTED, 2019

A LEVEL RESULTS 2022

It is with tremendous pride that Woolwich Polytechnic Sixth Form, rated "Outstanding" by Ofsted, celebrates the success of the Class of 2022. Along with their peers across the country, students entered this exam season with no previous public exam experience amidst the turmoil created by numerous lockdowns. However, there is no evidence of these difficulties in the cohort's results: 51% of students achieved A*-B, with a significant number continuing their academic pathways at Russell Group universities, including Oxford, Cambridge and Imperial, amongst others.

Notable results and destinations were:

- Peter Wareing - A*AA, History of Art at Oxford
- Peter Nguyen - A*A*A*A, Maths at Imperial
- Olumide Apanisile-A*A*A*A, Engineering at Cambridge
- Monica Ohakwa-A*AA, Law at Warwick
- Laura Bledyte-A*A*A, Architecture at University of the Arts London

It is without surprise that staff at Woolwich Poly are extremely proud of the students' achievements. Hannah Elliott, Head of Sixth Form comments, "I couldn't be prouder. I am delighted that we have maintained our outstanding results and the hard work from staff and students has paid off. I am filled with gratitude." Heads of Year, Ms Susan Principe and Mr Greg Tatton expressed a particular delight in what the year group has achieved. "The resilience this class has demonstrated is unlike anything we have ever seen. To not only come through the pandemic, but to thrive academically and achieve firsts for both themselves and the Sixth Form is incredible. We only hope that they are as proud of themselves as we are of them."

This sentiment is shared by Head of School, Mr Tom Lawrence, stating, "With another unpredictable and challenging year for our students, we are delighted that so many are leaving us with excellent grades, going onto the universities of their first choice. I am truly in awe of the talents our students have developed over their years with us and am confident that they will continue to develop their skills further over the next stages of their academic careers. I want to also congratulate our staff who have negotiated the uncertainties with dexterity and sensitivity to support and guide this highly motivated cohort to their A Level and BTEC success."



Greenwich Info

23 August 2022 | Issue 155

FOURTHLY UPDATES FROM ACROSS ROYAL GREENWICH - STRAIGHT TO YOUR DOOR!



INFO

Celebrating exam success across Royal Greenwich

Students all over Royal Greenwich have been celebrating their exam results.

It was great to see so many sixth form and college students picking up their A-Level and Key Stage 5 results on August 18 and we're thrilled to say that we had an excellent set of results across the borough.

There will be more reason to celebrate this week as GCSE students will be receiving their results on August 23. We look forward to seeing you and sharing your pictures.

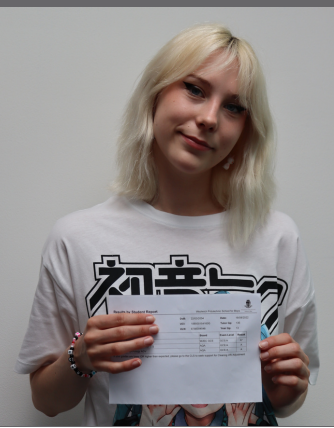
Cllr Anthony Chereke, Council Leader, said: "It's an incredible proof of our students, and it was great to meet some of you as you celebrated your A-Levels. We've had a fantastic set of results once again, and I'm sure our GCSE students will do so proud when they get their grades."

"I want to say a big thank you to parents and carers for the support you show your children, and I hope you are celebrating all their achievements too. Royal Greenwich is blessed with many great schools (and each has amazing teachers and support staff) and these results are a reflection of the standards we set as we want all our young people to flourish."

What's next post-16?

From training opportunities to apprenticeships to further education, there are lots of options for young people once they have finished Secondary School. For advice and guidance on what happens next visit: royalgreenwich.gov.uk/post16

Free and anonymous online mental health and emotional well-being support is available to all Royal Greenwich residents between the ages of 11 and 19 at kooth.com





CONTACT US



SCHOOL ADDRESS:
HUTCHINS ROAD, LONDON, SE28 8AT



TELEPHONE:
020 8320 5223



EMAIL:
SIXTHFORM@WOOLWICHPOLY.CO.UK



WEBSITE:
WWW.POLYSIXTHFORM.CO.UK



PART OF POLYMAT:
WWW.POLYMAT.CO.UK



Woolwich Polytechnic
Sixth Form

